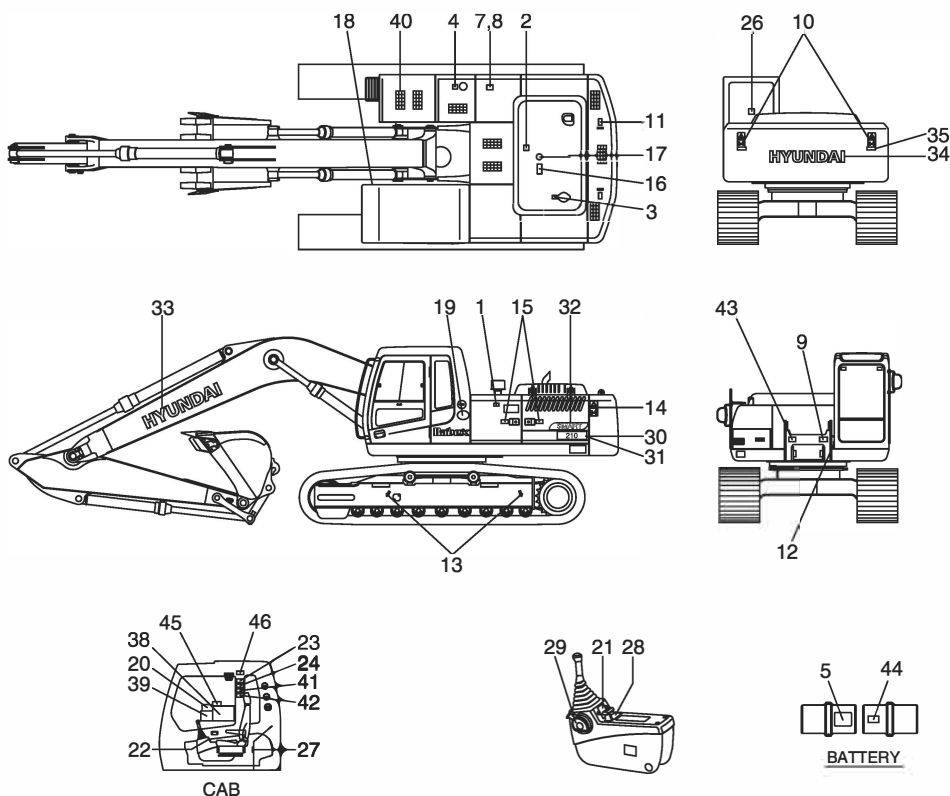


SAFETY LABELS

1. LOCATION

Always keep these labels clean. If they are lost or damaged, attach them again or replace them with a new label.



RD21070SL01

- | | | |
|-----------------------------|---------------------------|------------------------|
| 1 Air cleaner filter | 17 No step engine hood | 33 Trade mark(Boom) |
| 2 Turbo charger cover | 18 Transporting | 34 Trade mark(CWT) |
| 3 Radiator cap | 19 Low emission engine | 35 Reflecting |
| 4 Fueling | 20 Control ideogram | 38 Service instruction |
| 5 Battery accident | 21 Control ideogram(LH) | 39 Lifting chart |
| 7 Hydraulic oil level | 22 Control ideogram(RH) | 40 Step tread |
| 8 Hydraulic oil lubrication | 23 Ref operator manual | 41 Interference |
| 9 Reduction gear grease | 24 Max height | 42 Locking clamp |
| 10 Keep clear | 26 Alternate exit | 43 High pressure hose |
| 11 Lifting eye | 27 Air conditioner filter | 44 ECU connector |
| 12 Name plate | 28 Console box | 45 Turbocharger |
| 13 Sliding ideogram | 29 Safety lever | 46 Cabin RH pillar |
| 14 Sidekeep clear | 30 Model name(LH) | |
| 15 Stay fix | 31 Model name(RH) | |
| 16 Shearing engine hood | 32 Logo(SMART) | |

2. DESCRIPTION

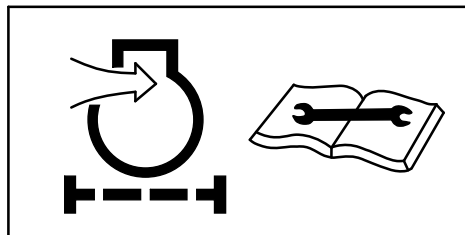
There are several specific warning labels on this machine please become familiarized with all warning labels.

Replace any safety label that is damaged, or missing.

1) AIR CLEANER FILTER(Item 1)

This warning label is positioned on the air cleaner cover.

- ※ **Periodic and proper inspection, cleaning and change of elements prolong engine life time and maintain the good performance of engine.**



21070FW01

2) TURBO CHARGER COVER(Item 2)

This warning label is positioned on the turbo charger cover.

- ⚠ **Do not touch turbo charger or it may cause severe burn.**



21070FW02

3) RADIATOR CAP(Item 3)

This warning label is positioned on the radiator.

- ⚠ **Never open the filler cap while engine running or at high coolant temperature.**

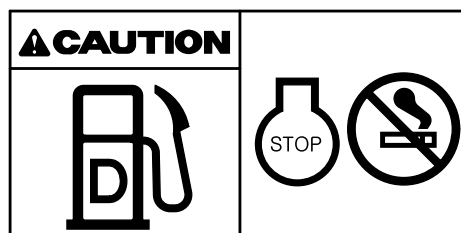


14070FW03

4) FUELING(Item 4)

This warning label is positioned on the right side of fuel filler neck.

- ⚠ **Stop the engine when refueling. All lights or flames shall be kept at a safe distance while refueling.**



21070FW04

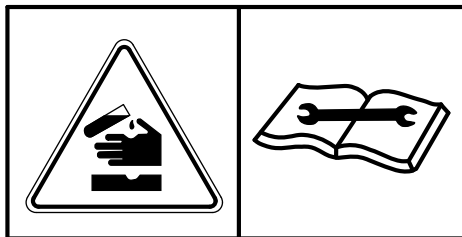
5) BATTERY ACCIDENT (Item 5)

This warning label is positioned on the battery cover.

- ▲ **Electrolyte containing sulfuric acid cause severe burns. Avoid being in contact with skin, eyes or clothes. In the event of accident flush with sufficient water, call a physician immediately.**

- ※ **Maintain the electrolyte at the recommended level. Add distilled water to the battery only when starting up, never when shutting down.**

With electrolyte at proper level, less space may cause the gases to be accumulated in the battery.



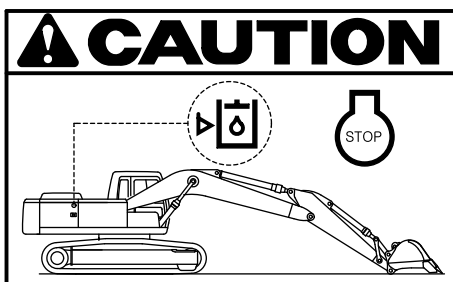
21070FW05

6) HYDRAULIC OIL LEVEL (Item 7)

This warning label is positioned on the left side of hydraulic oil level.

- ▲ **Place the bucket on the ground whenever servicing the hydraulic system.**

- ※ **Check oil level on the level gauge.**
- ※ **Refill the recommended hydraulic oil up to specified level if necessary.**



21070FW07

7) HYDRAULIC OIL LUBRICATION (Item 8)

This warning label is positioned on the right side of air breather.

- ※ **Do not mix with different brand oils.**
- ▲ **Never open the filler cap while engine running or at high coolant temperature.**
- ▲ **Loosen the cap slowly and release internal pressure completely.**

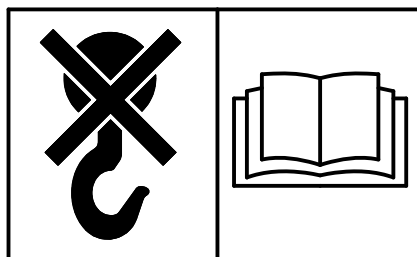


21070FW08

10) LIFTING EYE (Item 11)

This warning label is positioned on the counterweight.

- ▲ **Do not lift the machine by using lifting eyes on the counterweight or the lifting eyes may be subject to overload causing its breaking and possible personal injury.**
- ※ **See page 5-7 for proper lifting method of the machine.**



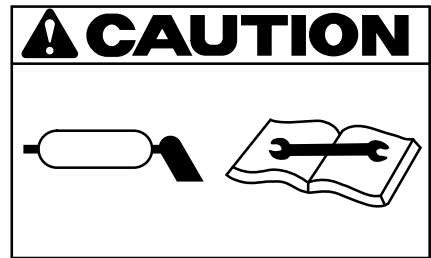
21070FW10

8) REDUCTION GEAR GREASE(Item 9)

This warning label is positioned in the front of upper frame.

⚠ Grease is under high pressure.

Grease coming out of the grease plug under pressure can penetrate the body causing injury or death.



21070FW35

9) KEEP CLEAR(Item 10)

This warning label is positioned on the counterweight.

⚠ To prevent serious personal injury or death keep clear of machine swing radius.

⚠ Do not deface or remove this label from the machine.



11)SIDE KEEP CLEAR(Item 14)

This warning label is positioned on the side of counterweight.

⚠ To prevent serious personal injury or death keep clear of machine swing radius.

⚠ Do not deface or remove this label from the machine.

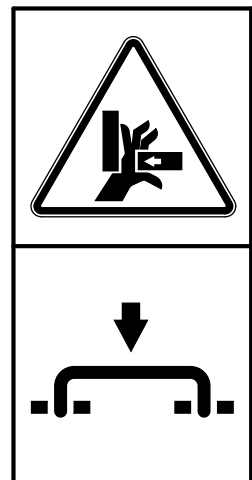


12)STAY FIX(Item 15)

This warning label is positioned on the side cover.

⚠ Be sure to support the stay when the door needs to be opened.

⚠ Be careful that the opened door may be closed by the external or natural force like strong wind.

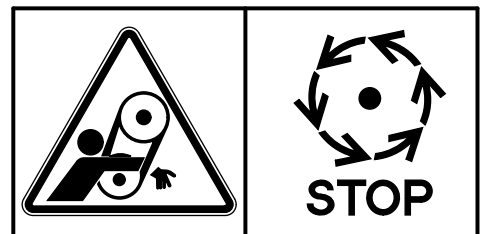


13)SHEARING-ENGINE HOOD(Item 16)

This warning label is positioned on the engine hood.

⚠ Do not open the engine hood during the engine's running.

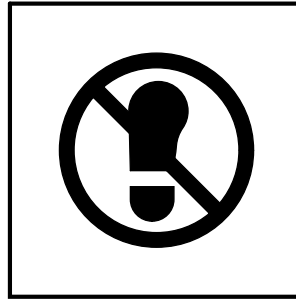
⚠ Do not touch exhaust pipe or it may cause severe burn.



14) NO STEP-ENGINE HOOD(Item 17)

This warning label is positioned on the engine hood.

△ Do not step on the engine hood.



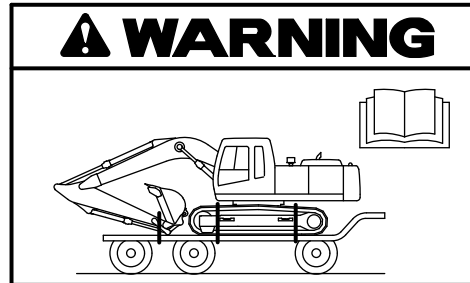
21070FW16

15) TRANSPORTING(Item 18)

This warning label is positioned right side of upper frame.

▲ Study the operator's manual before transporting the machine, if provided and tie down arm and track to the carrier with lashing wire.

※ See page 5-6 for details.



14070FW17

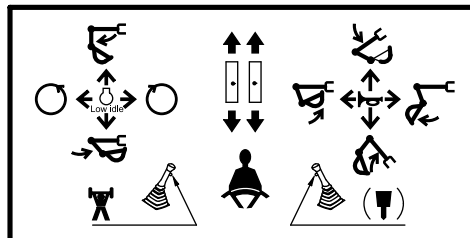
16) CONTROL IDEOGRAM(Item 20)

This warning label is positioned in right window of the cab.

▲ Check the machine control pattern for conformance to pattern on this label. If not, change label to match pattern before operating machine.

▲ Failure to do so could result in injury or death.

※ See page 4-11 for details.



36070FW19

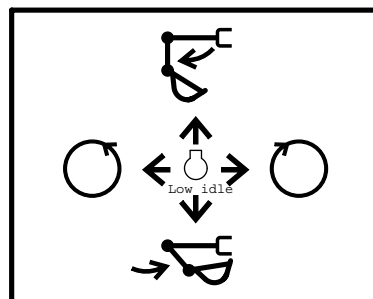
17) CONTROL IDEOGRAM-LH(Item 21)

This warning label is positioned on the LH console box.

▲ Check the machine control pattern for conformance to pattern on this label. If not, change label to match pattern before operating machine.

▲ Failure to do so could result in injury or death.

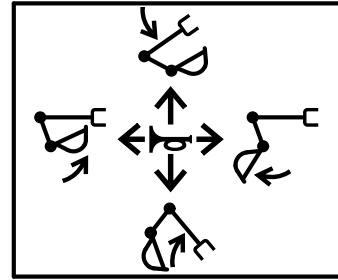
※ See page 4-11 for details.



18) CONTROL IDEOGRAM-RH(Item 22)

This warning label is positioned on the RH console box.

- ▲ **Check the machine control pattern for conformance to pattern on this label. If not, change label to match pattern before operating machine.**
- ▲ **Failure to do so could result in injury or death.**
- ※ **See page 4-11 for details.**

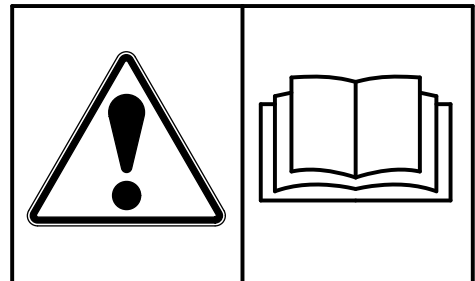


21070FW21

19) REF OPERATOR MANUAL(Item 23)

This warning label is positioned on the right side frame of the cab.

- ▲ **Study the operator's manual before starting and operating machine.**

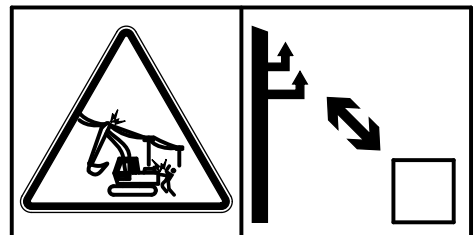


21070FW22

20) MAX HEIGHT(Item 24)

This warning label is positioned on the right side frame of the cab.

- ▲ **Serious injury or death can result from contact with electric lines.**
An electric shock being received by merely coming into the vicinity of an electric lines, the minimum distance should be kept considering the supply voltage as page 1-7.

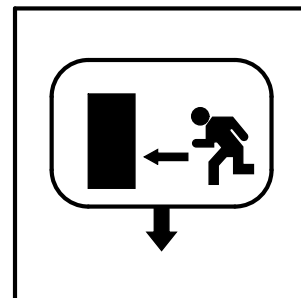


21070FW23

21) ALTERNATE EXIT(Item 26)

This warning label is positioned on the inside of rear window.

- ※ **The rear window serves us an alternate exit.**
- ※ **To remove rear window, pull the ring and push out the glass.**

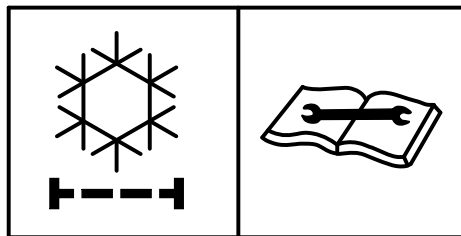


21070FW25

22) AIR CONDITIONER FILTER (Item 27)

This warning label is positioned on the air conditioner cover up.

- ※ **Periodic and proper inspection, cleaning and change of filter prolong air conditioner life time and maintain good performance.**

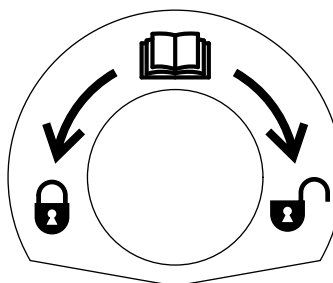


21070FW26

23) SAFETY LEVER (Item 29)

This warning label is positioned on the cover safety.

- ⚠ **Before you get off the machine be sure to place the safety lever LOCKED position.**



21070FW28

24) REFLECTING (Item 35)

This warning label is positioned on the counterweight.

- ⚠ **To prevent serious personal injury or death keep clear of machine swing radius.**
- ⚠ **Do not deface or remove this label from the machine.**



2507A0FW03

25) INTERFERENCE (Item 41)

This warning label is positioned on the right side frame of cab.

- ⚠ **Be careful to operate machine equipped with quick clamp or extensions.**
- ⚠ **Bucket may hit cab or boom, boom cylinders when it reached vicinity of them.**

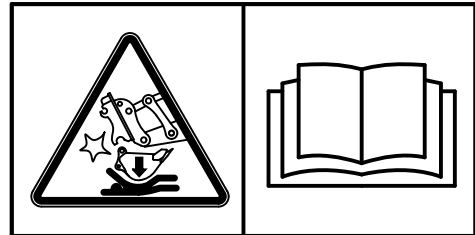


14070FW62

26) CLAMP-LOCKING (Item 42)

This warning label is positioned on the right side window of cab.

- ⚠ **Serious injury or death can result from dropping bucket.**
- ⚠ **Operating the machine with quick clamp switch unlocked or without safety pin of moving hook can cause the bucket to drop off.**

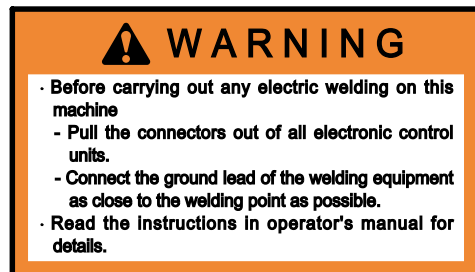


14070FW60

27) ECU CONNECTOR (Item 44)

This warning label is positioned on the battery cover.

- ⚠ **Before carrying out any electric welding on this machine.**
Pull the connector out of all electric control units.
 - ⚠ **Connector the ground lead of the welding equipment as close to the welding point as possible.**
- ※ See page 6-42 for detail.

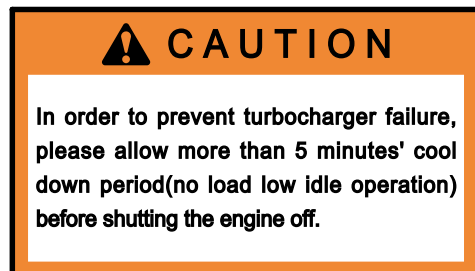


7807AFW20

28) TURBOCHARGER (Item 45)

This warning label is positioned in right window of the cab.

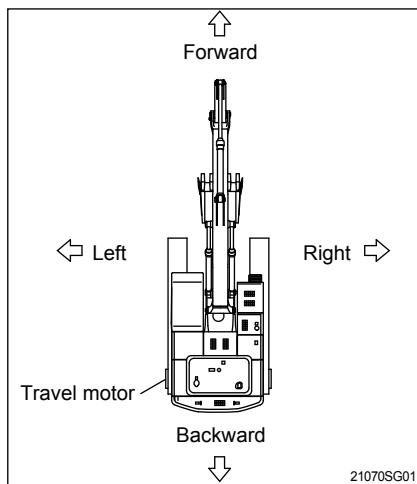
- ⚠ **In order to prevent turbocharger failure, please allow more than 5 minutes' cool down period (no load low idle operation) before shutting the engine off.**



7807AFW20

1. DIRECTION

The direction of this manual indicate forward, backward, right and left on the standard of operator when the travel motor is in the rear and machine is on the traveling direction.

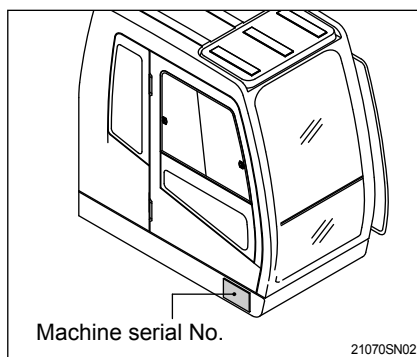


2. SERIAL NUMBER

Inform following when you order parts or the machine is out of order.

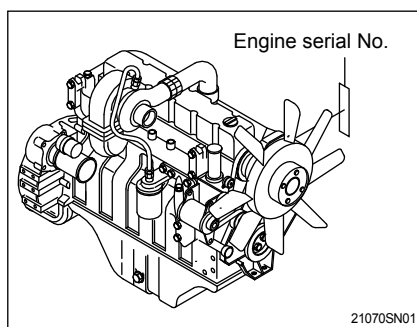
1) MACHINE SERIAL NUMBER

The numbers are located below the right window of the operator's cab.



2) ENGINE SERIAL NUMBER

The numbers are located on the engine name plate.



3. SYMBOLS

▲ Important safety hint.

△ It indicates matters which can cause the great loss on the machine or the surroundings.

※ It indicates the useful information for operator.